

1799

SHAF

PASIR

000

[Blank white label on spine]



A5 FEINT

Please use this book to 1
record details of your shaft
bashing trips. Try to include
as much information as
possible, preferably including the
following:

- Date of trip
- Who was on the team
- Area
- Compass bearings of entrance from well
known features or peaks (pref. 3)
- Appearance of entrance
- Location description
- Is the cave tagged? If so, what is its
number?
- Cave description
- Leads
- Final status (O = undescended
⊙ = unfinished, ⊗ = dead)

16-7-99 Pip, Hills, Dick
Area 7

Cave 40/7
~~10m pitch descended~~
10m pitch descended and found
to end in boulder floor with no
leads and little prospect!

12/7/99 JC, Lew
Area 7

Cave 49/7 (? 8/7)
200m E of Sulkey path. Triangular
hole at top of scree clearly visible from
Arrio (0° to Arrio), and from the way up ridge path.
Walk in entrance for 10m to check
climb up Chalked at top.
Ndr tagged \otimes See Logbook.

6/8/99 William's Observations on reading shaft-boring guide
2/5 Water goes down 2" wide rift in final chamber (bottom of 2nd pipe)
at least I think it did when I went there in 1980 + Skippy.
William

(3)

11/5 Work another look if we can find it. The snow plug blocked the way in 1980 when there was a lot more snow.

Location - in Pac 10. Visited on same day as 2/5 & 3/5.

Final rift W.

1/11 Pozo Opimisto & Pushed 10 slump in 1993 or 1995 by ? & Chris Denham. I was kind member of party. W.

Other shaft boring in log:

16/7/99 40/7 @ 10/9

Area S 29/5, 64/5

20/7/99 ~~12/8, 35/9, 36/9, 37/9~~ Pozo Jerga (Area S)

23/7/99 12/8, 35/9, 36/9, 37/9

5/8/99 12/8 @

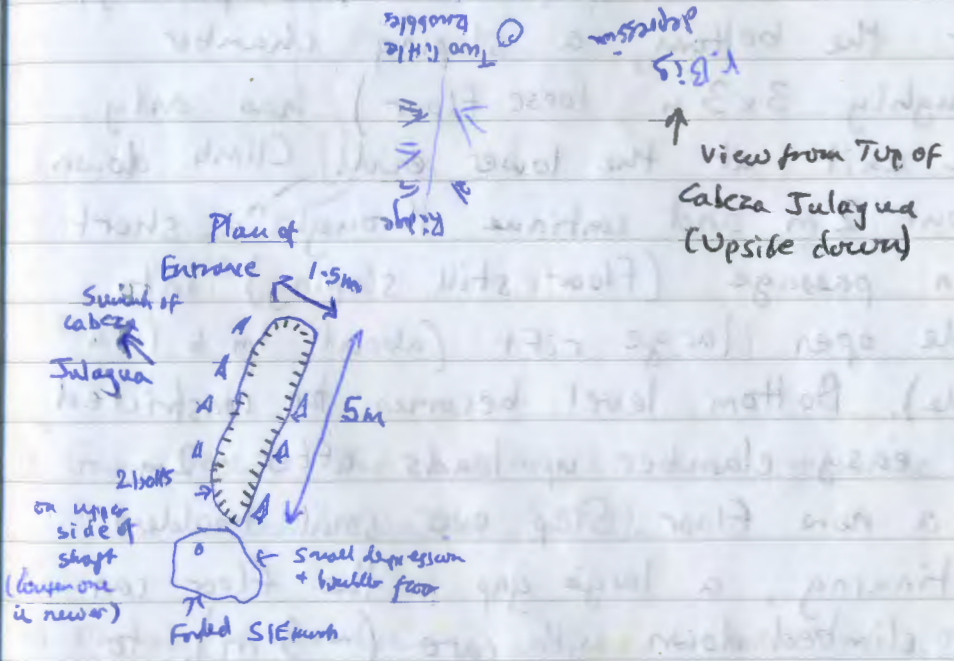
Mon 9 Aug Shaft Boring Area 4 William Stead Richard Doyle

Looking near Summit of Cabeza Julagua.

Found old shaft + 2 bolts. Bearing ^{accelerate} 112° May from summit ca 100m (est'd). (+ 1 newer bolt)

Cave comprises 30m vertical shaft with small ledge 2/3 way down about 1m x 4m. The ground slopes steeply along line

(4)



of shaft & the bolts are placed in the top end. At upper end of shaft is a small depression with a boulder floor. Faded SIE marks by top bolt or on far side of depression. Main hang has 2 bolts, the other lower appears to be newer than the SIE mark & a 3rd (old) bolt is just the other side of the lip. Both the lower bolt on the main hang

(5)

* The (old) upper lift were useable. Rope backed up around large boulder.

Shaft is about 30m deep - a 35m rope only reached with rope backup around the boulder.

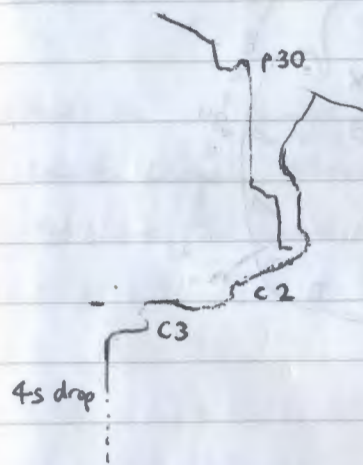
There is a small ledge $\sim \frac{2}{3}$ of the way down the shaft. (Possible rub point). At the bottom, a sloping chamber (roughly 3×3 m, loose floor) has only one exit at the lower end. Climb down about 2m and continue through a short thin passage (floor still sloping) into wide open large rift (about 1m to 1.5m wide). Bottom level becomes too constricted, but easy clamber up leads after ~ 2 m to a new floor. Step over small boulders. Continuing, a large gap in the floor can be climbed down with care (~ 3 m), to a ledge in the rift. Beyond the ledge, a stone falls ~ 4 seconds.

Everything looks pristine and untouched, although the SIE at least must have been here before. A bit of a mystery....

(6)

The rift, although it bends a bit, is heading due south in the direction of ^{Pozu del} Jitu (Xitu).

Compass bearing S. from top of ridge points towards Jitagua.



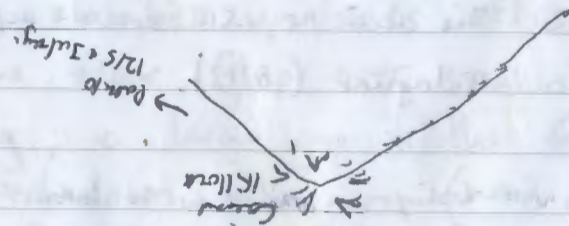
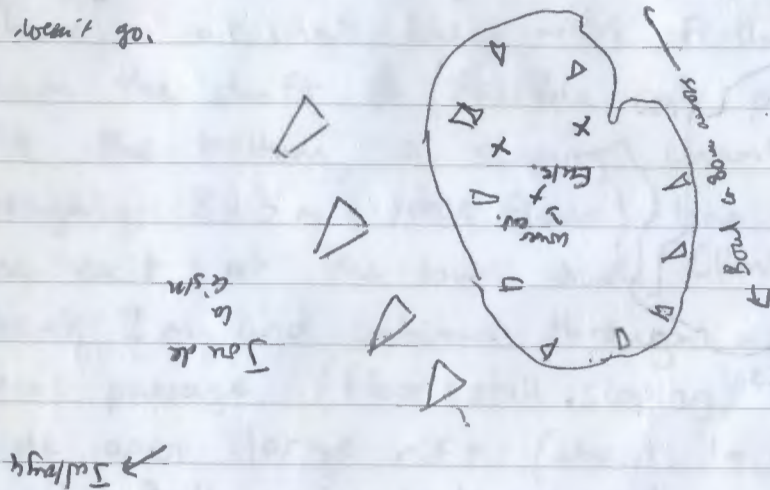
- 1) Garin reckons this is in the SIE area & might be Pozu Cabeza Jitagua. (8/13).
- 2) May also be worth looking at other holes at bottom of hole. There have no marks but look as if boulders have been moved to descend them.

William

7

10 Aug 99. Have found a couple of unworked ^{shells} ~~cores~~ in Area 5 not v. far from 2/S and 3/S. It's too misty to do good bearings though.

Both are small shells which may go "on side of dry bank looking towards path. Lower part "lower entrance" to one - doesn't go.



Verdict:

I don't think there's anything that goes here but the other entrance (shaft 5m deep)

isn't worked.

↙ ^{case on corral?}

Bearing: Coined Hillside on Trea path 075 May

Junction of Jaltaya + Trea path 160 May

(Sorry, the mist's just come in obliterating all the measurements, could have got

8

a good triangulation on Jaltaya, Cabeza del Gova + Cabeza del Verde)

Cabeza del Gova 038 May.

Also noted very loose in hole under large, perched boulder on R just after ^{of Trea path} good junction Trea path splits from Jaltaya path. Choked.

What's the v. obvious hole about 3m deep right by the Trea path?

052

Cabeza Llanura Oblique Cabeza del Verde 008 May

Must have been looked at.

(9)

14/8 William & Doyle

Heading for La Trajada to find my stashed gear, found 6/9, which may be worth having another look at (we didn't have any SRT gear until we got to La Trajada).

Bearings for 6/9: 123° to Jultayu
(mag) 234° to Verdeluenga
175° to Cuvicenté

Location: two large pits in karst outcrop on the ^{northern} edge of a medium sized bowl below the cliffs of Cuvicenté

New entrance 38/9 tagged by William

Can't find in shaftbashing guide, so here is a description:

Location: To the right of La Jayada, over a small ridge. Large walk in entrance about 6m wide and 2m high.

(10)

Description
Slopes ~~up~~

Bearings: 127° to Cuvicenté
048° to Ario Huts ^{Pastew}
243° to Verdeluenga

Description: Slopes upwards at rear. Small gravel ~~at~~ ^{on} right at rear goes nowhere. Sloping squeeze on left at rear leads to a small sloping chamber. At the base of this chamber, a way through to a climb of about 5m in loose rift can be found. ^(goes nowhere) Also from the chamber, a way back into the left hand side of the entrance can be found (climb ^{up} over dead sheep). Unpromising. ⊗
(Rich D.)

New entrance 39/9 tagged

description:

Small shaft, about 1.5m x 1.5m, about 5m deep, with a too tight continuation at bottom. In karst outcrop to the right of La Jayada (true left), ^{below} Verdeluenga.

(11)

Bearings: 135° to Cuvicenté
 229° to Verdeluenga

Piddly little rift below may connect?

NB- Same valley as 36/9, about 50m closer up valley
in direction of La Verdellenga

Approx same level as 38/9 but ^{100m} further away from Cuvicenté

New (?) Entrance 40/9(?)

Not tagged until we've looked by both.

Obvious shaft on lhs of large bowl of La Reina ridge
forms rhs. Unmarked (seen looking towards La Verdellenga).

V. Faded SIE Mark + Cairn near entrance - no other records
found.

La Verdellenga 246° (from cave mouth)

From lip of bowl nearest Anio

Bearing to cave = 197°

to Verdellenga 234°

to Cuvicenté 119°

to Anio Pastors Hut 048°

to Cabeza Blanca 070°

(12)

15 Aug 99

William Richard

Revisited 10/9 - high up Grestieru ^{at 60} in valley ~~at~~ nearby Lagoa.
Re-measured bearings (mag) Jultayá 130° Cuvicenté 167°

Exciting new entrance 41/9 O

Found on way to 40/9. About
500m NW of La Jayada, in rocky
outcrop. 2m wide shaft, 2s drop
Bearings: 140° (mag) to Cuvicenté

227° to Verdeluenga

110° to Jultayá (true)

61° to Cabeza del Verde

On edge of area a valley on rocky outcrop of edge of gress
with cave. About same level as La Jayada. Both Cuvicenté &
Verdeluenga almost at right angles.

Entrance is large - rubble filled shaft hole with open shaft
in one corner

Later found 36/9 nearby which is about 50m S of 41/9

41/9 undescended as gear left at 40/9.

(13)

Went back to 40/9 ~~is~~ tagged at upper end.

Large shaft 6m x 3m, rigged using bolt and boulder back-up at upper end of shaft. About 15m drop onto snow plug with a bolt re-belay at ~ 10m depth (on ledge). Continue down the steep ~~on~~ snow plug under the rock ledge, to a narrow drop through into another steeply snow-floored chamber (about 6m x 4m).

Various ways off were examined, and either became too tight due to snow, or stopped (RD).

A rift, ~~2m~~ 2m below the main belay drops back into main shaft. Bigger!

Visited during low snow levels, so unpromising and not worth further investigation unless exceptionally low snow levels exist.

(14)

36/9 - Bottomed ~~is~~ 10m shaft with snow in bottom. Doesn't go.

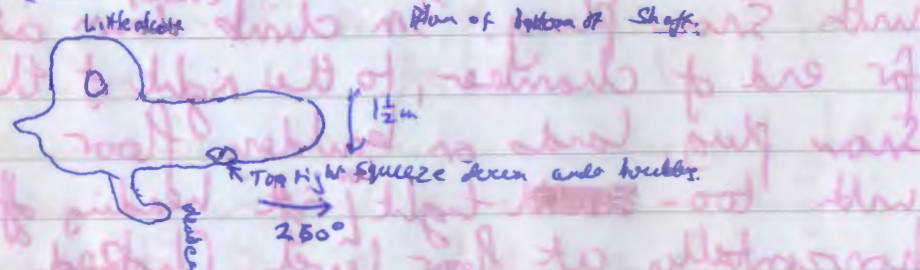
20 August 99 Shaft Basking Area 9 E
Steve, William

41/9

Finally reached 41/9, where we reached cavity by ~~climbing~~ ascending Guskaten from the Mortimery Pool to the 10/9 valley, then traversing around the side of Guskaten + along the pole yet but here.

Enormous - large boulder-filled staircase with shaft in 1 corner. Shaft 12m deep rigged a 1 bolt + natural back-ups.

From sh



Bottom of shaft is flat rubble floor with remains of snow plug. Two little cranks (one on each side) go nowhere. Removing a few rocks from under the snow plug revealed a (too) tight squeeze (possibly by L&R) to a body sized cavity with a rock. A

(15)

ceiling & r/w walls = rubble floor. Possible slight draught, draught.

Possibly diggable.

⊗? ~~front~~

20/8/99 (cont'd)

37/9

⊗

Verdelleysua 221° Mag

Caviceve (from 10m above entrance) 145° Mag

Note: This entrance (ragged) is actually down valley from 36/9 and 41/9.

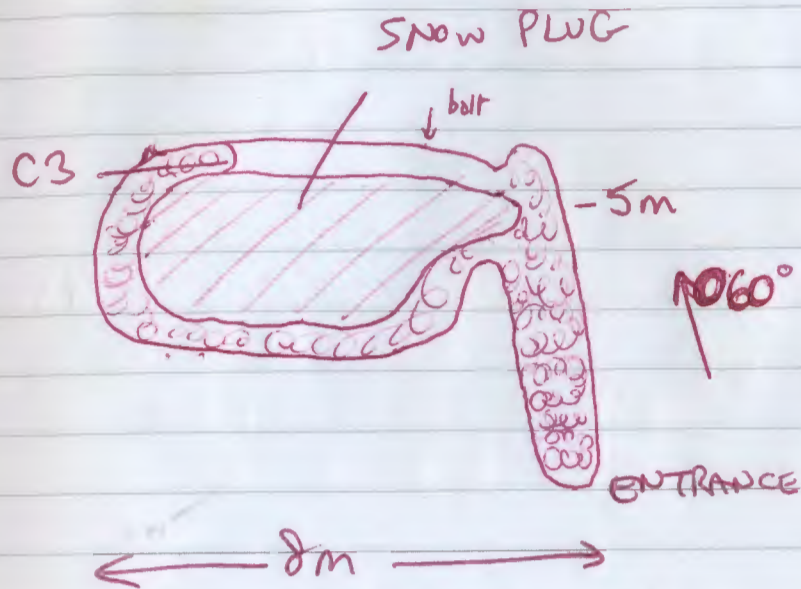
Steve P, William

Walk-in, daylight entrance down bouldery slope to small chamber with snow plug. 3m climb ^(boiled) down at far end of chamber, to the right of the snow plug, lands on bouldery floor with too-tight ^{low} right heading off horizontally at floor level. Choked ~~after~~ after 1m. Possibly a barely-perceptible draught.

A couple of vertical shafts up to the surface

(16) ent

PLAN (GRADE 1 SURVEY)



directly over the snow plug ensure that the cave is hit. As it can be accessed from the surface without light or carving gear, and as the snow plug amounts to tens of m³ of ice, this cave would be a valuable source of water for anyone camped nearby.

(directional compasses between here, 41/9 & 42/9 & 43/9)